

8

7

6

5

4

3

2

1

F

F

E

E

D

D

C

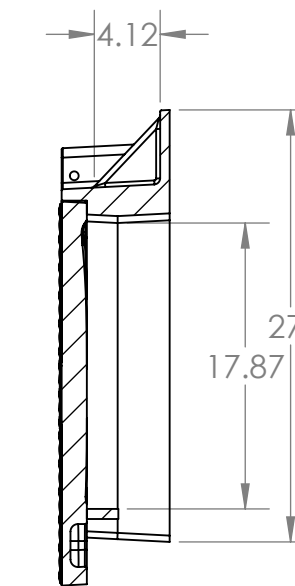
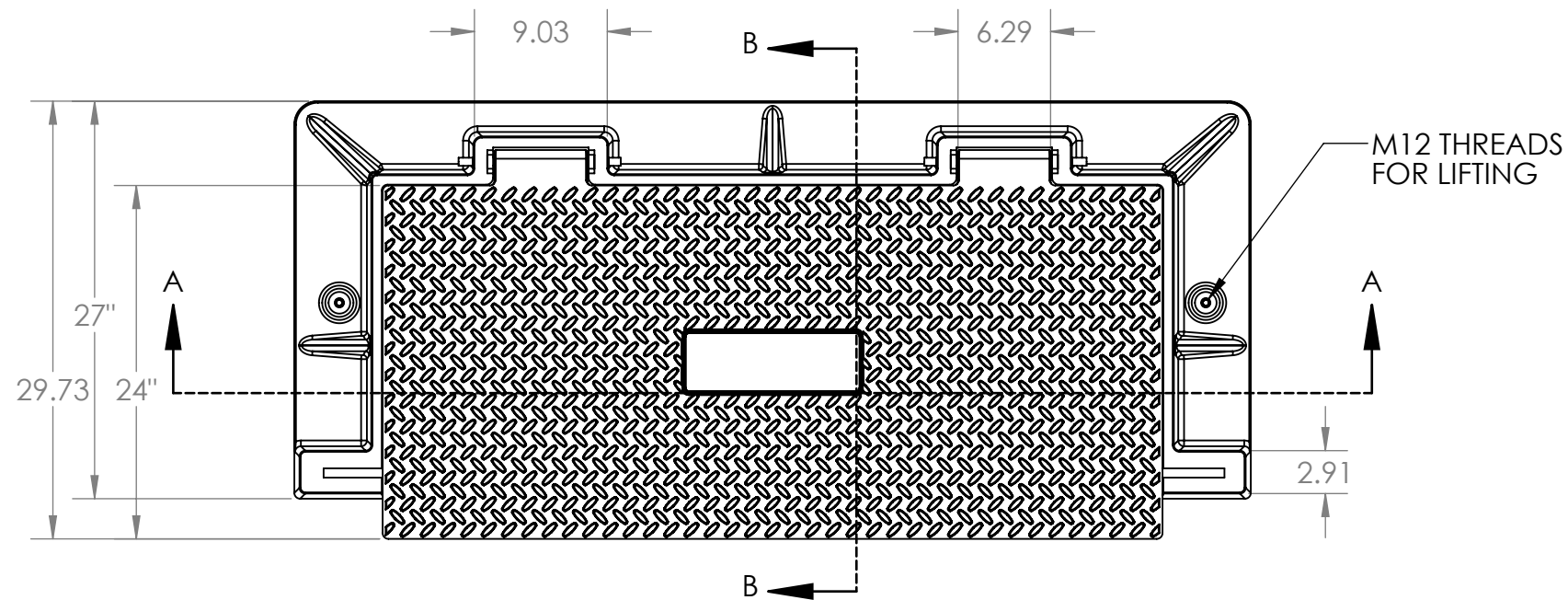
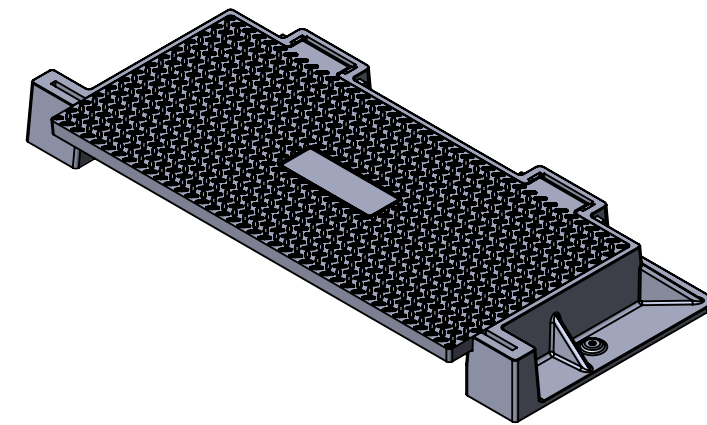
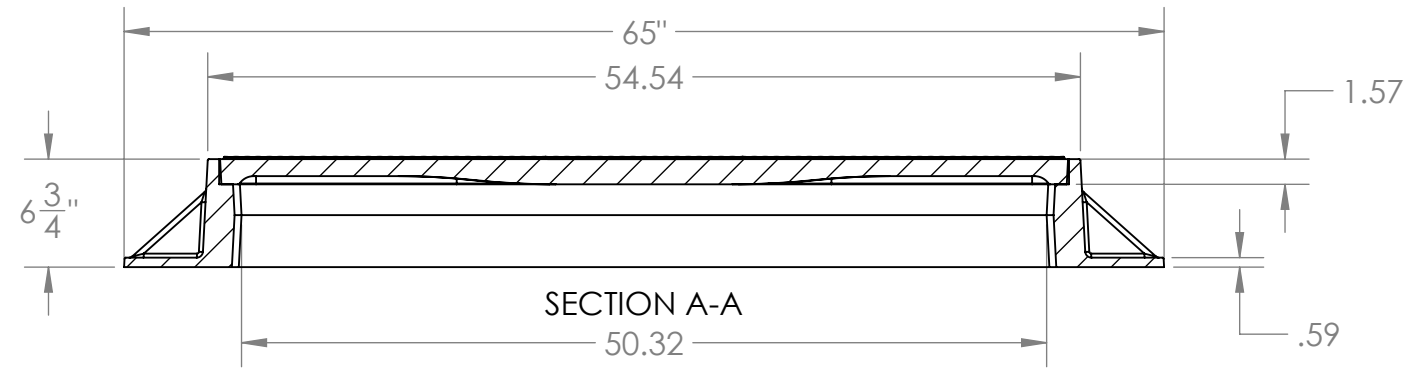
C

B

B

A

A




DRAFT ANGLE IS 3 DEGREES

SECTION B-B

NOTE: 304 STAINLESS STEEL BAR IS 2" x .63" x 61.22"

PROPRIETARY AND CONFIDENTIAL
 THE INFORMATION CONTAINED IN THIS DRAWING IS THE SOLE PROPERTY OF VIRTUAL POLYMER COMPOUNDS. ANY REPRODUCTION IN PART OR AS A WHOLE WITHOUT THE WRITTEN PERMISSION OF VIRTUAL POLYMER COMPOUNDS IS PROHIBITED.

		UNLESS OTHERWISE SPECIFIED:		NAME	DATE	 info@vpcfiberglass.com 10478 Ridge Road Medina, New York 14103	
		DIMENSIONS ARE IN INCHES		DRAWN	CD	12/17/18	TITLE:
		TOLERANCES:		CHECKED	---	---	STORM DRAIN COVER
		FRACTIONAL ±		ENG APPR.	---	---	SIZE
		ANGULAR: MACH ± BEND ±		MFG APPR.	---	---	DWG. NO.
		TWO PLACE DECIMAL ±		Q.A.	---	---	VPC-WKS-2X5
		THREE PLACE DECIMAL ±		COMMENTS:			REV
		INTERPRET GEOMETRIC TOLERANCING PER:					
		MATERIAL:					
		FINISH:					
NEXT ASSY	USED ON	APPLICATION		DO NOT SCALE DRAWING		SCALE: WEIGHT: SHEET 1 OF 1	

8

7

6

5

4

3

2

1