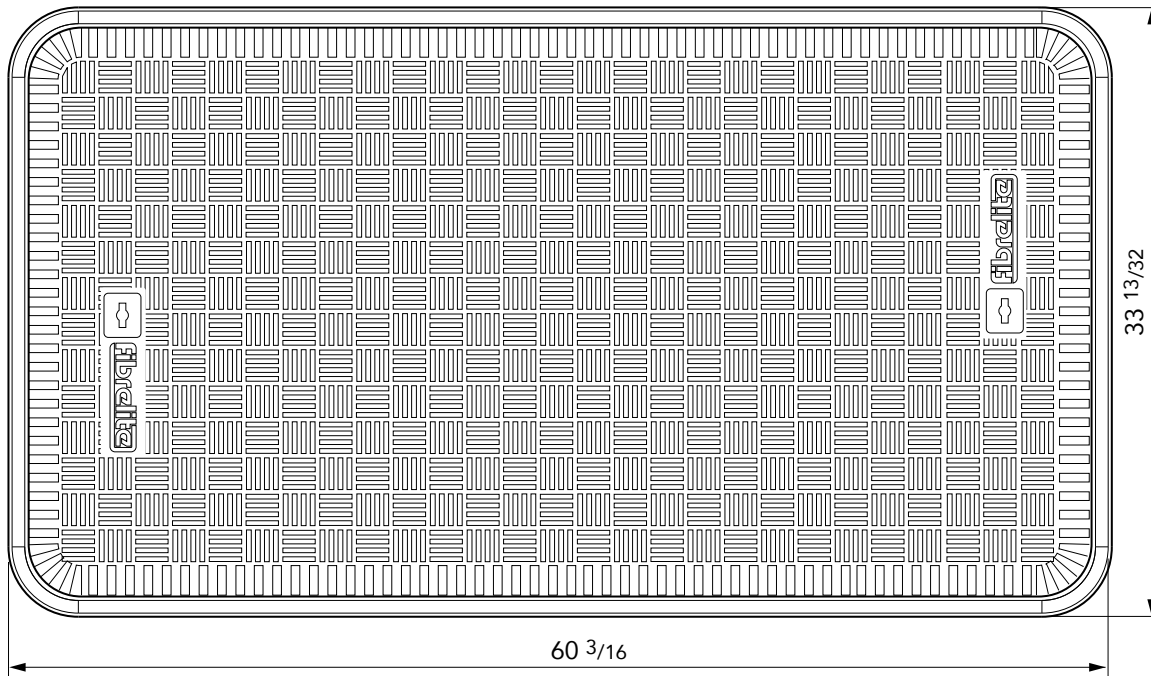
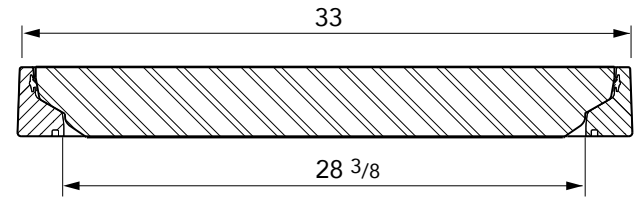
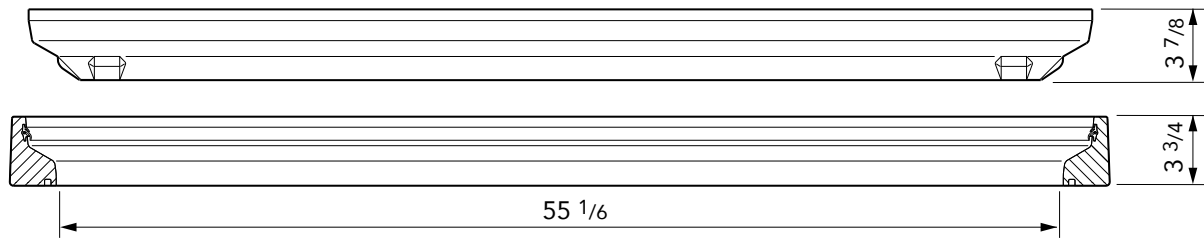




55" x 28" flat sealed composite cover with an aluminum frame.

For reference purposes only. This drawing is not a specification. Order against product code only. To enable continuous improvement of our products, the designs and specifications are subject to change without notice.

FIBRELITE 
PART OF OPW A  COMPANY



Load Rating	Cover Weight	Frame Weight
SLD	60 lbs	37 lbs
LD	84 lbs	37 lbs
SD	110 lbs	37 lbs
HD	119 lbs	37 lbs
SHD	150 lbs	37 lbs
EHD*	183 lbs	37 lbs

* Extreme Heavy Duty Load Rating

55" x 28" flat sealed composite cover with an aluminum frame.

For reference purposes only. This drawing is not a specification. Order against product code only. To enable continuous improvement of our products, the designs and specifications are subject to change without notice.



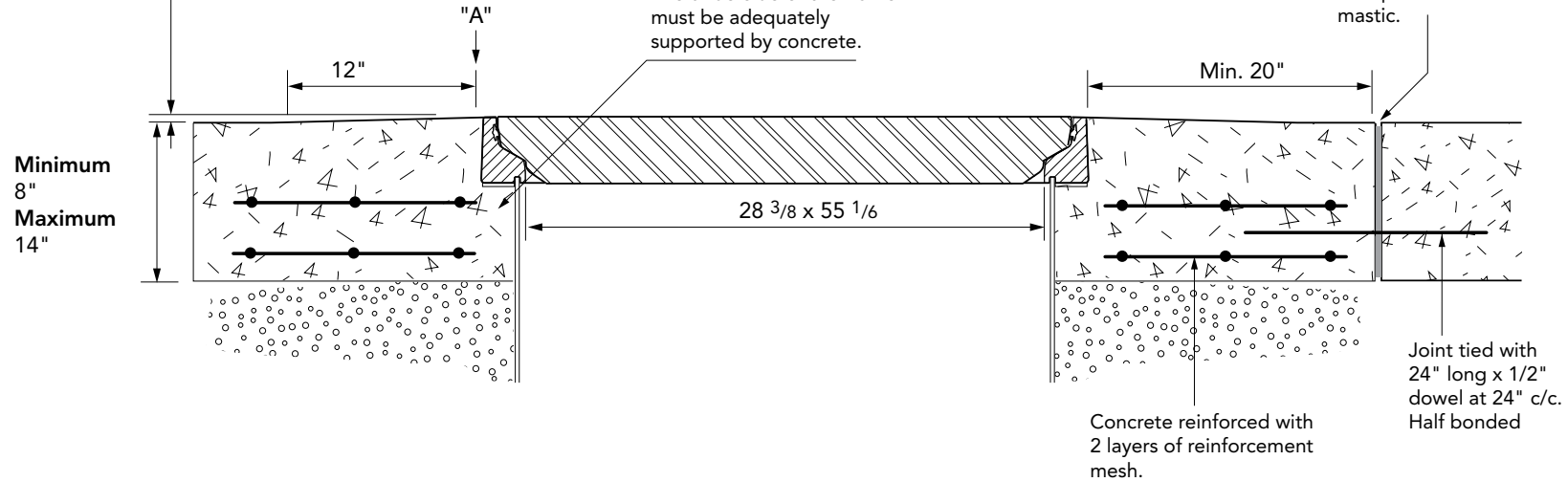
CONCRETE

VERY IMPORTANT

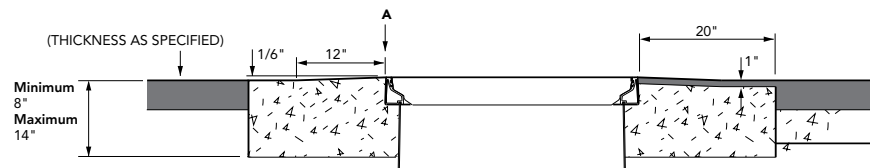
OUTER EDGE "A" OF FRAME SET 1/6" ABOVE GENERAL GRADE AREA WITH CONCRETE RAMPED AWAY OVER 12"

VERY IMPORTANT
The underside of the frame must be adequately supported by concrete.

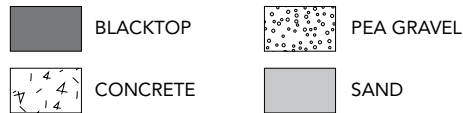
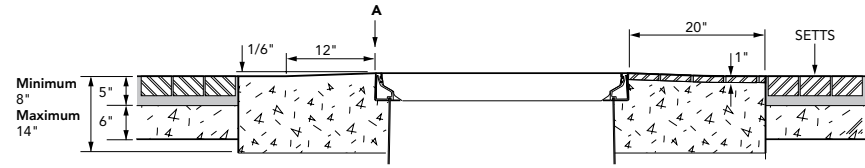
Expansion joint filled with petrol resistant mastic.



BLACKTOP



SETTS



55" x 28" flat sealed composite cover with an aluminum frame.

For reference purposes only. This drawing is not a specification. Order against product code only. To enable continuous improvement of our products, the designs and specifications are subject to change without notice.

